

Network Printing Scale

CN1



Network Printing Scale

Introducing the first product of the new CN series, CN1. CN stands for "CAS NETWORK" and is a printer scale lineup with enhanced network functionality. Provides robust remote functionality based on enhanced networks. Provides robust remote functionality based on enhanced networks. Improved information transfer capability with 7" color display. Also, the main features and products of the existing CL series are compatible.



CN1 SERIES

Overview



Display

7" color display
800 X 480 pixels
16.7M Colors(24bit)

Body

Dark Gray ABS material upper body
Die-casting aluminum body
secures stable weighing performance.



Keyboard

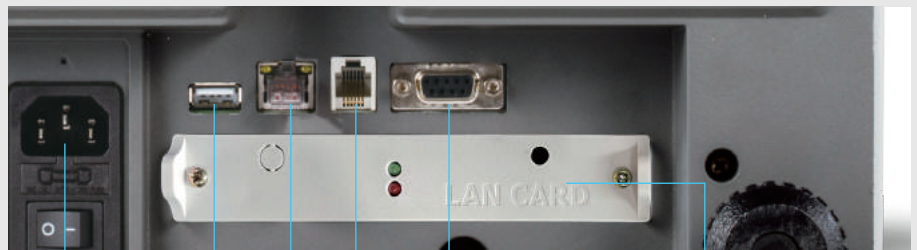
The push feedback is clear (polydom type) PLU 72 Key
Function 36 Key

Printer

100mm/sec speed Label
width 60mm length 290mm
maximum

Interface

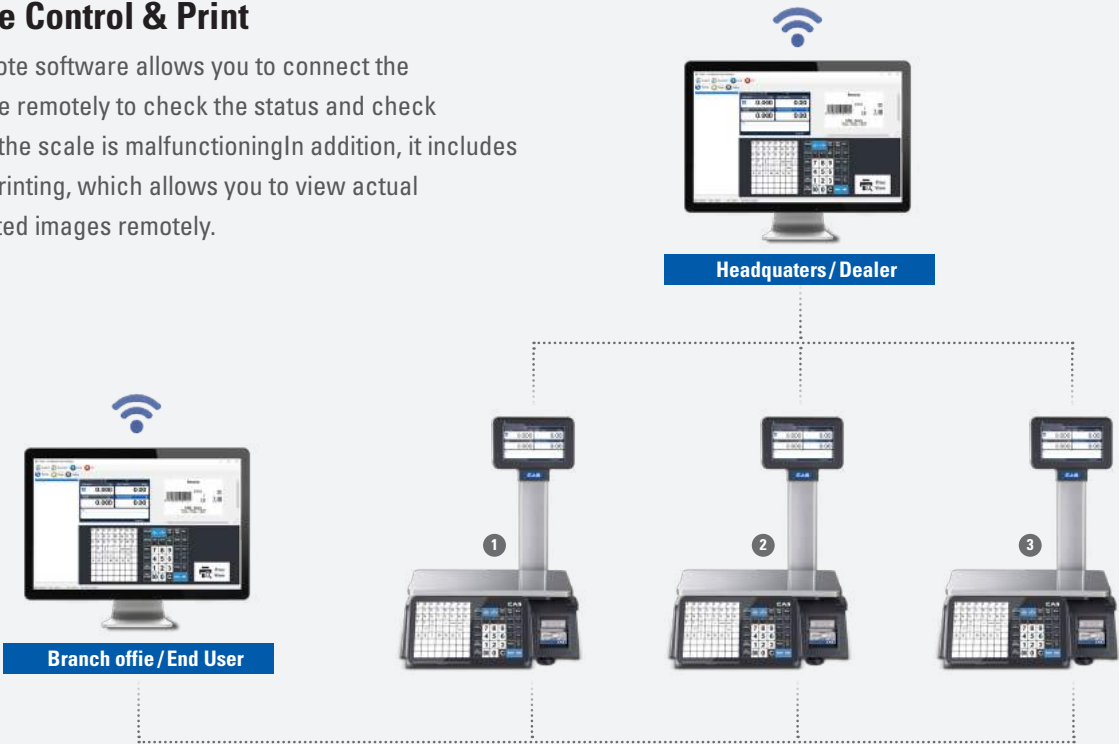
- 1) USB Port for barcode scanner, keyboard, PC
- 2) LAN for weighing network system
- 3) RJ11 for cash drawer
- 4) RS-232C for external printer, PC
- 5) Wireless LAN for Wi-Fi (optional)



■ Feature

Remote Control & Print

CN1 remote software allows you to connect the CN1 scale remotely to check the status and check whether the scale is malfunctioning. In addition, it includes remote printing, which allows you to view actual CN1 printed images remotely.



Remote Firmware Update via ethernet

CN1 products can be updated firmware remotely when connected to wired and wireless Ethernet. Firmware updates can be easily installed by connecting RS-232C or USB flash drives as before.



7" vivid color display

Display resolution is 800 x 480, which accurately displays product information and is easy to use as a UI considering users.



PLU and Programmable Function Keys

72 PLU Keys and 36 Function Keys are available. For convenience, the CN1 Label Printing Scale can store up to 10,000 PLU. Quickly transfer PLU data via Wi-Fi or RS-232C for scale to computer or computer to scale.



■ Specification

MODEL	CN1			
Max. Capacity	6/15 kg	15/30 kg	15/30 lb	30/60 lb
Interval	2/5 g	5/10 g	0.005/0.01 lb	0.01/0.02 lb
Max. Tare	-9.998 kg	-9.995 kg	-9.995 lb	-29.99 lb
A/D Conversion Rate	Approx. 8 times/sec.			
Measurement Type	Load Cell			
Platter Size	380 x 250 mm			
Key	72 PLU key, 36 function key, 144 PLU			
Display	7" color display(800 x 480)			
Printer	Speed 100 mm/sec			
Printing Resolution	202 dpi			
Label Size	Width : 40 mm ~ 60 mm / Length : 30 mm ~ 290 mm			
Barcode Type	UPC, EAN13, I2OF5, CODE128, GS1 databar, QR code			
Printer Type	Direct thermal print			
Operating Temp.	-10°C ~ 40°C (14°F ~ 104°F)			
Power	AC 100 ~ 240V 50/60Hz 1.5A			

■ Dimension

